

Isle Of Wight
Sales And Lettings Ltd

01983 642122
Info@iowsl.co.uk

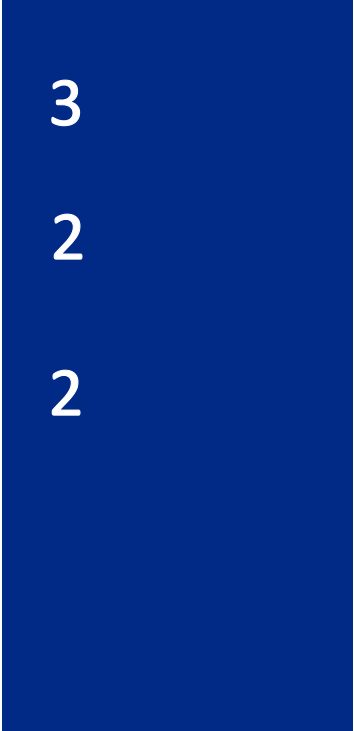
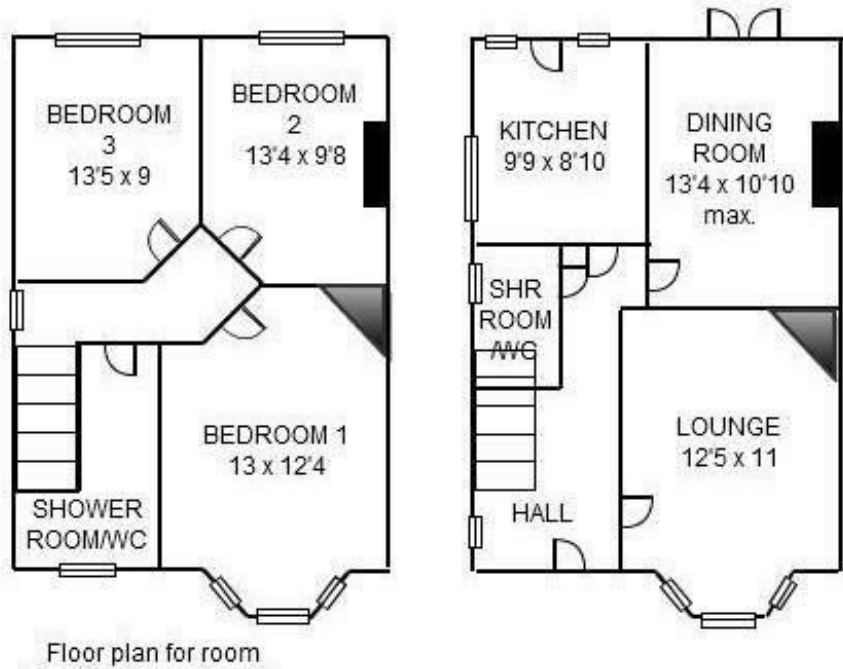


Lets Get You Moving



ASKING PRICE
£199,999
Whitepit Lane
Newport, PO30 1NH

EPC RATING: D COUNCIL TAX BAND: C



Energy Efficiency Rating		Current	Potential
Very energy efficient - lower running costs			
(92 plus)	A		
(81-91)	B		
(69-80)	C		
(55-68)	D	65	
(39-54)	E		
(21-38)	F		
(1-20)	G		
Not energy efficient - higher running costs			
England & Wales		EU Directive 2002/91/EC	

Agents Note: Whilst every care has been taken to prepare these particulars, they are for guidance purposes only. All measurements are approximate and are for general guidance purposes only and whilst every care has been taken to ensure their accuracy, they should not be relied upon and potential buyers/tenants are advised to recheck the measurements



OFFICE ADDRESS
 Flat 7 Auckland Court, 11
 Auckland Road East
 Southsea
 PO5 2HA

OFFICE DETAILS
 01983 642122
 info@iowsl.co.uk